

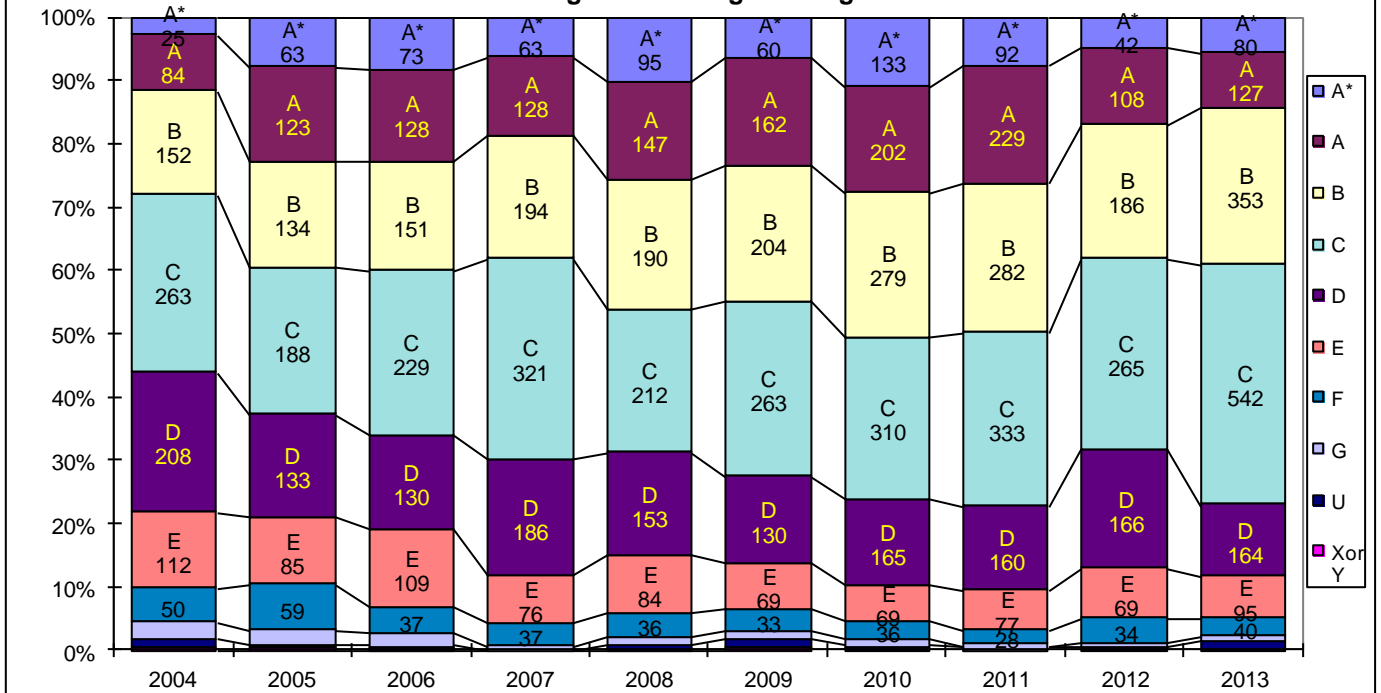


Overall GCSE results 2004-2013 (inc. Voc equivalents)

Grade	2004	2005	2006	2007	2008	2009	2010	2011	2012	2013	2004-13
A*	25	63	73	63	95	60	133	92	42	79	726
A	84	123	128	128	147	162	202	229	108	122	1438
B	152	134	151	194	190	204	279	282	186	342	2125
C	263	188	229	321	212	263	310	333	265	542	2926
D	208	133	130	186	153	130	165	160	166	164	1595
E	112	85	109	76	84	69	69	77	69	95	845
F	50	59	37	37	36	33	36	28	34	40	390
G	25	19	18	5	14	12	14	9	7	12	135
U	14	4	3	1	4	13	6	2	3	19	69
XorY	2	2	1	0	1	3	0	0	0	0	9
Entries	935	810	879	1011	936	949	1211.5	1212	880	1432	10256
Students	108	93	95	106	107	114	115	121	100	103	1062
%A-C	56%	63%	66%	70%	69%	73%	76%	77%	68%	77%	70%
%A-G	98.3%	99.3%	99.5%	100%	99%	98%	100%	100%	100%	99%	99%
A* and A	109	186	201	191	242	222	334	321	150	207	2163

Per stu-	2004	2005	2006	2007	2008	2009	2010	2011	2012	2013	2004-13
Av. Entry	9.30	10.00	9.25	9.05	9.38	8.55	10.90	10.86		11.63	9.88
Av points	324.4	346.6	374.4	390.8	364.0	342.8	451.4	428.9	466.0	535.0	402.43
5+ A-C	58%	60%	61%	67%	65%	72%	77%	80%	81%	89%	71%
inc EM				53%	45%	56%	58%	64%	51%	65%	56%
5 A-G	99%	98%	96%	96%	94%	91%	91%	100%	100%	100%	97%
1 A-G	100%	100%	98%	98%	99%	97%	100%	100%	100%	100%	99%

Relative Percentages achieving GCSE grades 2004-2013

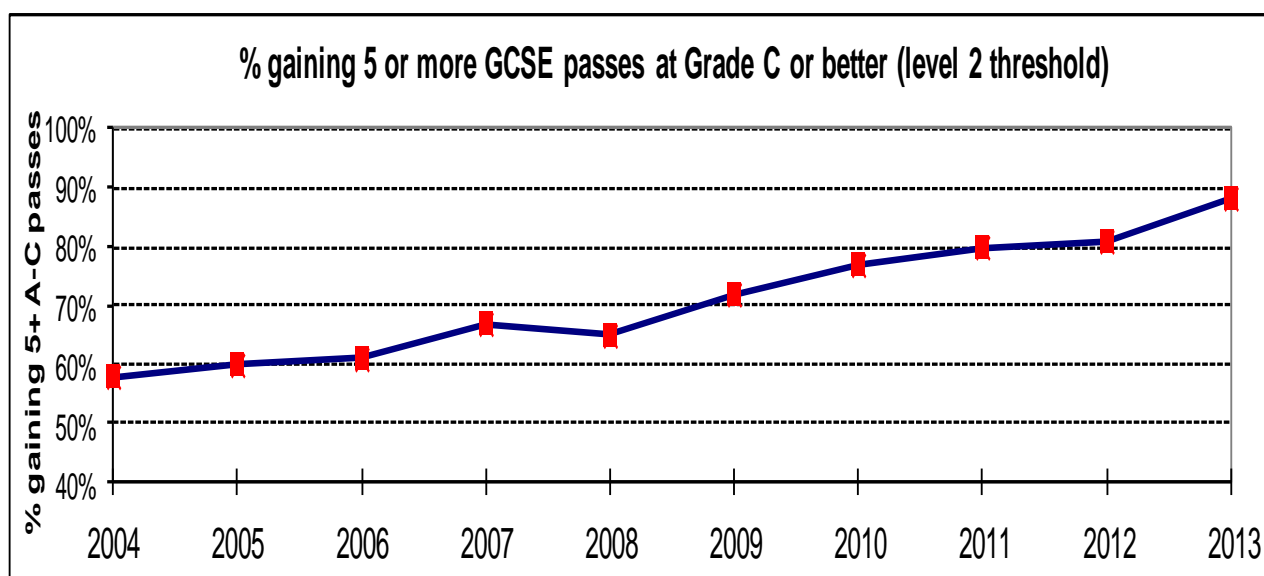


Providing a nurturing environment, inspiring every individual to flourish

GCSE Results 2013

Course	Entry	A*	A	B	C	D	E	F	G	U
English Language	103	2	10	24	32	17	12	6	0	0
English Literature	84	1	12	27	26	15	3	0	0	0
Mathematics	103	6	6	18	51	9	6	5	1	1
Science: Core	79	3	7	12	29	11	10	6	1	0
Science: Applied/Additional	79	2	7	12	28	11	15	3	1	0
Triple Science:										
Biology	24	3	7	5	3	5	1	0	0	0
Chemistry	24	3	4	7	4	3	3	0	0	0
Physics	24	3	6	4	6	5	0	0	0	0
Art	29	4	1	7	6	9	2	0	0	0
Design Tech: Food	12	0	2	4	2	2	1	1	0	0
Design Tech: Graphics	20	1	3	1	2	3	6	4	0	0
Engineering Diploma*	6	0	0	5	25	0	0	0	0	5
Environment & Land Diploma*	4	0	5	5	10	0	0	0	0	0
French	31	1	2	6	11	11	0	0	0	0
Geography	43	4	7	12	11	5	2	2	0	0
German	34	1	4	4	12	9	3	1	0	0
History	47	4	6	7	10	12	3	2	3	0
Humanities	94	2	6	20	28	10	17	7	3	1
ICT OCR Nationals	77	0	3	32	42	0	0	0	0	0
I-Media (2 GCSEs)	45	-	-	90	-	-	-	-	-	-
Music	12	0	2	1	6	3	0	0	0	0
Physical Education	31	1	6	11	5	3	4	1	0	0
General Studies	88	5	12	15	27	20	6	1	2	0
Applied Learning**		33	8	21	159	0	0	0	0	11

* Diplomas equate to 5 GCSE entries ** Most applied learning courses equate to 4 GCSE entries





A Level Results 2013

<i>A Level courses</i>	<i>Entry</i>	<i>A*</i>	<i>A</i>	<i>B</i>	<i>C</i>	<i>D</i>	<i>E</i>	<i>U</i>
Applied Science	3	0	0	0	3	0	0	0
Art	4	0	0	3	1	0	0	0
Biology	25	0	5	6	4	5	5	0
Business Studies	14	0	1	6	5	2	0	0
Chemistry	25	1	7	5	6	4	2	0
Design Technology	6	0	1	2	2	0	1	0
Drama	6	0	1	5	0	0	0	0
English Lang & Lit	19	1	6	4	6	2	0	0
English Literature	5	0	1	0	4	0	0	0
French	7	0	0	3	3	0	0	1
Geography	15	1	3	6	4	1	0	0
Government & Politics	8	0	0	2	5	0	1	0
German	8	0	2	3	1	2	0	0
History	25	0	2	8	10	3	2	0
Food & Nutrition	8	0	0	1	3	3	1	0
Mathematics	13	1	4	5	0	1	1	1
Further Mathematics	1	0	1	0	0	0	0	0
Music	8	0	3	4	1	0	0	0
Music Technology	5	0	0	1	2	2	0	0
Physics	19	1	6	3	3	2	4	0
Physical Education	13	2	2	4	4	1	0	0
Psychology	14	1	1	6	3	1	3	0
Religion & Philosophy	4	1	0	2	1	0	0	0
Sociology	13	0	3	4	4	2	0	0
<i>Other Level 3 courses</i>								
Engineering Diploma	7	0	0	1	3	2	1	0
BTEC Health & Social Care Diploma	9	3	1	4	1	0	0	0

Overall A Level Results 2004-2013 (excluding General Studies)

Grade	2004	2005	2006	2007	2008	2009	2010	2011	2012	2013	10yrs
A*							5	14	15	9	43
A	29	32	34	42	46	52	23	35	49	49	391
B	28	40	25	49	41	65	33	61	68	83	493
C	30	48	26	41	32	57	33	58	57	75	457
D	24	24	37	21	14	29	33	45	51	31	309
E	13	6	15	14	15	18	21	35	23	20	180
U	1	2	3	6	3	5	6	10	2	2	40
Entries	125	152	140	173	151	226	154	258	265	269	1913
Students	60	61	46	47	52	75	56	87	92	95	671
%A-B	45.6%	47.4%	42.1%	52.6%	57.6%	51.8%	39.6%	42.6%	49.8%	52.4%	48.5%
%A-E	99.2%	98.7%	97.9%	96.5%	98.0%	97.8%	96.1%	96.1%	99.2%	99.3%	97.9%

National Curriculum Assessment Results

Key Stage 3—2013

Teacher Assessment Levels					
2011		2012		2013	
Level 6 or above		Level 6 or above		Level 6 or above	
English	67%	English	63%	English	65%
Mathematics	56%	Mathematics	77%	Mathematics	76%
Science	68%	Science	63%	Science	62%
Level 5 or above		Level 5 or above		Level 5 or above	
English	92%	English	90%	English	91%
Mathematics	84%	Mathematics	94%	Mathematics	89%
Science	96%	Science	95%	Science	98%

(These results placed us in the top 2% nationally)

Last Published National Results (2008) Key Stage 3:
Percentage of Year 9 pupils achieving each level

Test Result Levels	
Level 6 or above	
English	35%
Mathematics	57%
Science	41%
Level 5 or above	
English	74%
Mathematics	77%
Science	71%

Authorised and unauthorised absence 2012-2013	
Number of registered pupils of compulsory school age on roll for at least one session (half-day) up to 30 May 2013	520
Percentage of half-days missed through authorised absence	5.68
Percentage of half-days missed through unauthorised absence	0.34