

# MALTON GRAMMAR SCHOOL PROPOSED EXTENSIONS

Yorks. N.E. County Council.  
Education Committee

SCALE EIGHT FEET TO ONE INCH.

John L. Coverdale L.R.C.A. ARCHITECT  
Yorks. N.E. Education Office, County Hall, Northallerton  
Dec. 1901

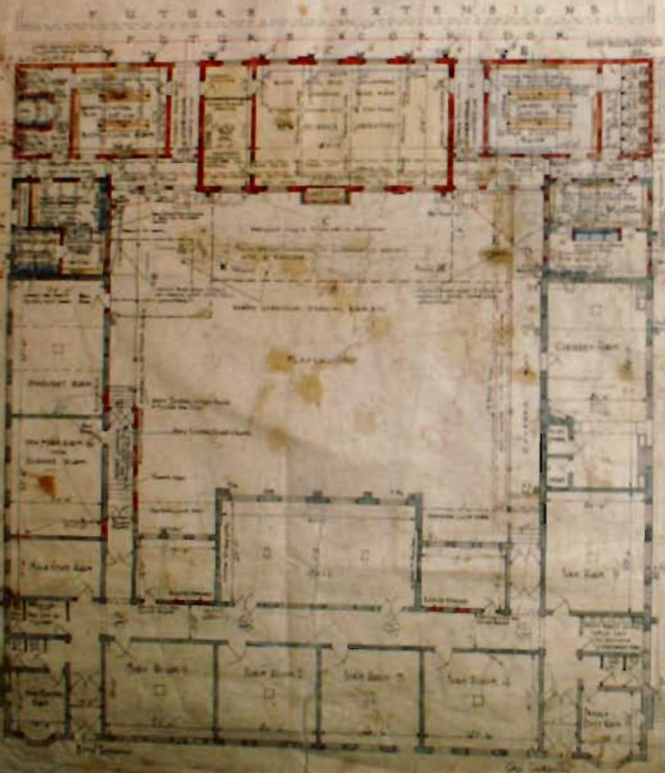
Geographic Copy



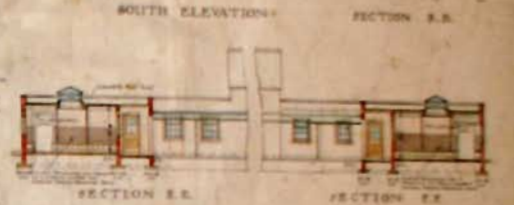
NORTH ELEVATION



SOUTH ELEVATION



SECTION A.A.



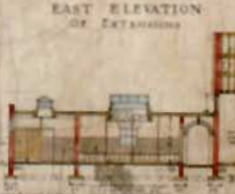
SECTION B.B.



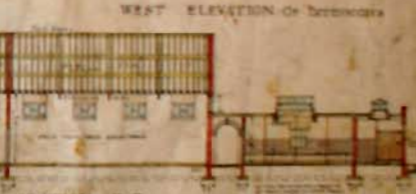
SECTION C.C.



SECTION D.D.



EAST ELEVATION OF EXTENSIONS



WEST ELEVATION OF EXTENSIONS



ROOF PLAN